

FDA6000CQ – XP10

(Feeder)

1.

2.

3.

4.

5. Feeder

1)

2) (JOG)

6.

7.

- XGT

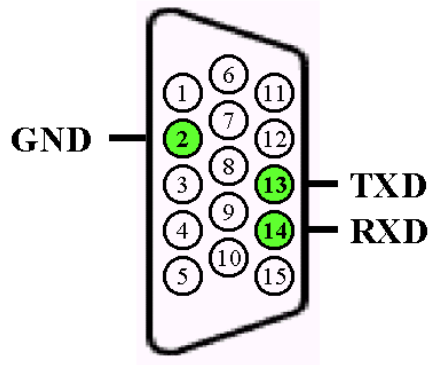
- (FDA6000CQ, FDA7000Q)

*

[FDA]		6001C	6002C	6004C	6005C	610C	6012C	6015C	6020C	6030C	6045C	6075C
		3 AC200 ~ 230V +10/-15%, 50/60Hz										
	[KVA]	0.5	0.8	1.3	1.5	2.1	2.5	3.1	4.1	6	8	12
		3 AC										
	[A]	1.25	2.1	3.2	4.2	6.9	9.8	11	16	21	32	50
	[A]	3.8	6.3	9.6	12.6	19.2	29	33	48	63	96	132
		3 PWM (IPM)										
()		(32Point)										
		() , 가										
		(32Point)										
		()										
		(4Point)										
		Loop , Step/Auto										
(MPG)		500[kpps]										
		+ , + , 2 (A + B)										
		Open Collector, Line Driver										
Jog		, (Limit)										
Override												
가		4가 (8 1)										

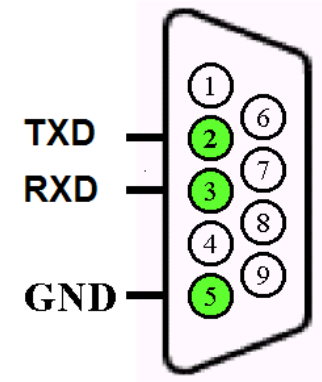
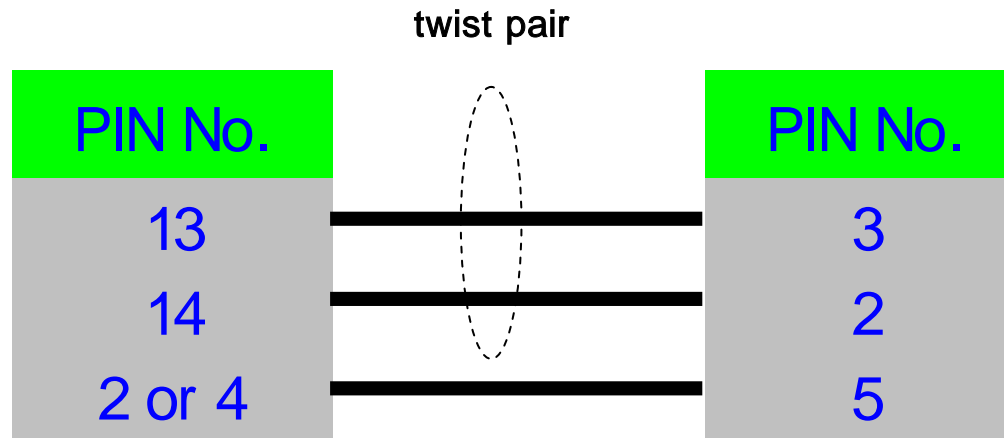
: FDA6000CQ <-> XGT

FDA6000CQ



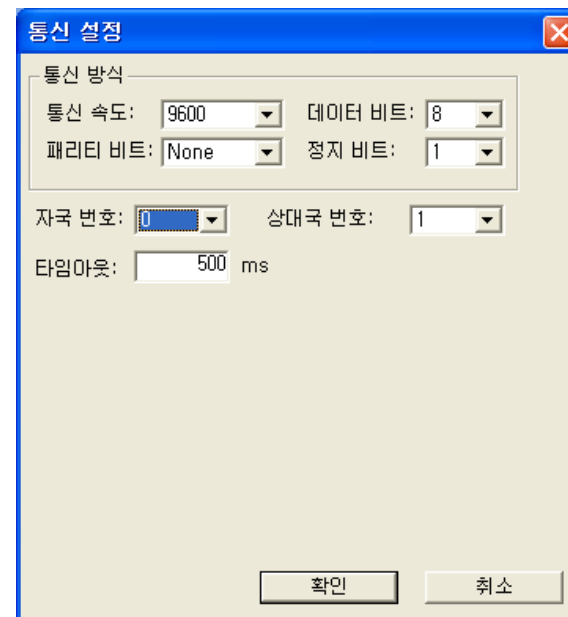
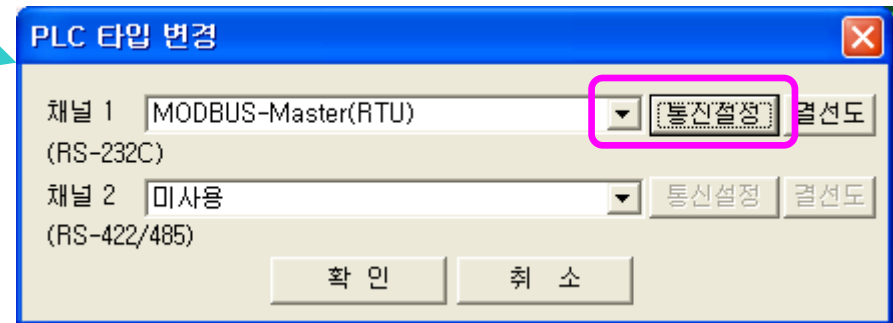
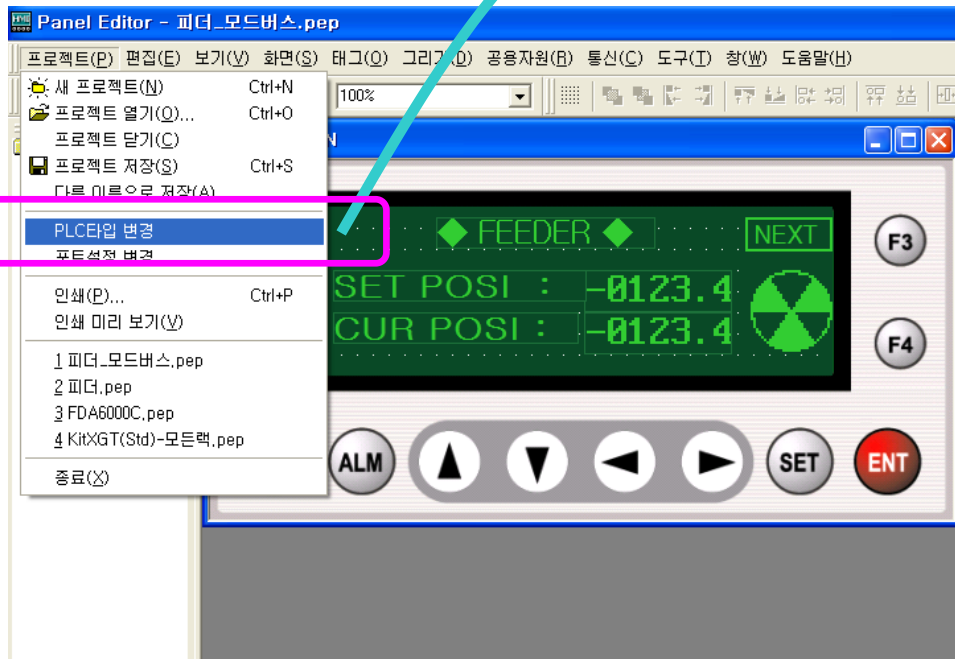
D-sub 15 pin (male)

XGT PANEL

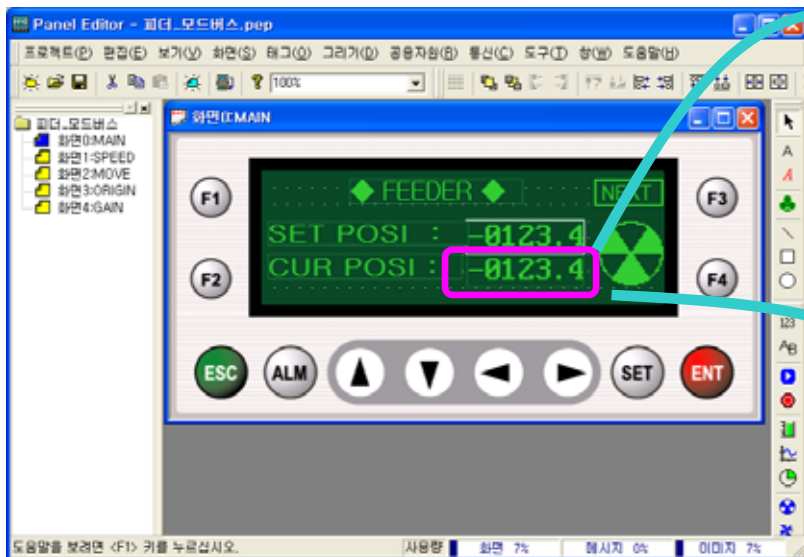


D-sub 9 pin (female)

*. P-dori 2,3 가 .
Master-K PLC P-dori PLC



‘가
ID
‘1’



10.2 위치 결정형

Address	메뉴	Data Type	메뉴명(변수명)	속성	초기치	Min	Max	단위	
40011	0x000A	St-01	Float	CMD Position	R	0	-99999.9	-99999.9	USER
40012	0x000B	St-02	Float	Current Position	R	0	-99999.9	-99999.9	USER
40013	0x000C	St-03	Float	Position Error	R	0	-99999.9	-99999.9	USER
40014	0x000D	St-04	Float	Motor Speed	R	0	-9999.9	9999.9	RPM
40015	0x000E	St-05	Float	Limit speed	R	0	-9999.9	9999.9	RPM
40016	0x000F	St-06	Int	Torque Limit	R	0	0	300	%
40017	0x0010	St-07	Int	Load Rate	R	0	-300	300	%
40018	0x0011	St-08	Int	Max Load Rate	R	0	-300	300	%
40019	0x0012	St-09	Float	Program Version	R	0			

숫자 속성

위치
X: 98
Y: 40

주소
채널: S Ch1 Ch2
국 번: 1
주소 값: 400011

효과
☐ 테두리
☐ 색 반전

글꼴
☐ 작은 글꼴
☒ 보통 글꼴
☐ 큰 글꼴

데이터
☐ 쓰기 가능
☒ 부호 가능
☐ 암호 사용
최대값: 32767
최소값: -32768

표시 형식
☒ DEC ☐ HEX ☐ BCD
전체 자릿수: 5
소수점 이하 자릿수: 1
☐ 0채움

☒ Word
☐ Long

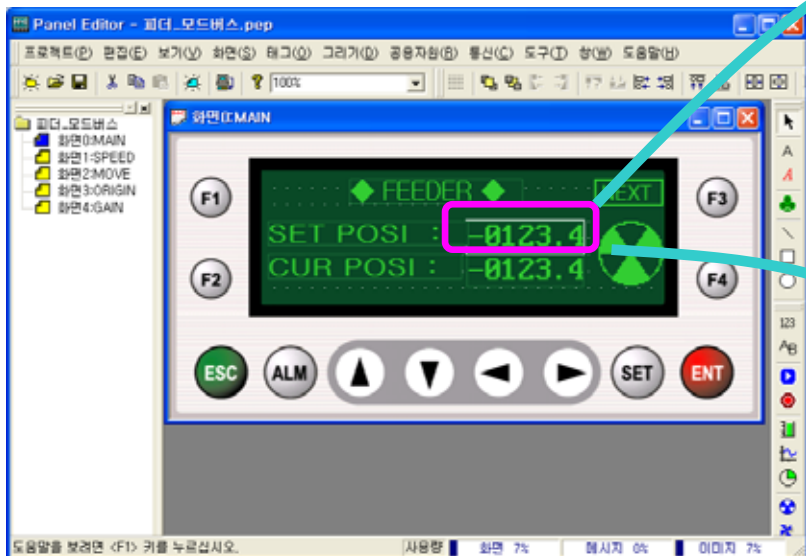
확인 취소

Address

Table Address-1

()

ex) 40012 → 400011



40501	0x01F4	P5-01	Float	Position CMD0	R/W	10	-99999.9	99999.9
40502	0x01F5	P5-02	Float	Position CMD1	R/W	20	-99999.9	99999.9
40503	0x01F6	P5-03	Float	Position CMD2	R/W	30	-99999.9	99999.9
40504	0x01F7	P5-04	Float	Position CMD3	R/W	40	-99999.9	99999.9
40505	0x01F8	P5-05	Float	Position CMD4	R/W	50	-99999.9	99999.9
40506	0x01F9	P5-06	Float	Position CMD5	R/W	60	-99999.9	99999.9
40507	0x01FA	P5-07	Float	Position CMD6	R/W	70	-99999.9	99999.9

숫자 속성

위치

X: 98

Y: 24

주소

채널 S Ch1 Ch2

국 번 1

주소값 400500

효과

☐ 테두리

☐ 색 반전

글꼴

☐ 작은 글꼴

☒ 보통 글꼴

☐ 큰 글꼴

데이터

☒ 쓰기 가능

☒ 부호 가능

☐ 암호 사용

최대값: 32767

최소값: -32768

표시 형식

☒ DEC ☐ HEX ☐ BCD

전체 자릿수: 5

소수점 이하 자릿수: 1

☐ 0채움

Word

Long

확인

취소

Feeder

Feeder

, Gain

가

).

가 150mm

Feeding 200mm

Start

가

*P7-01	Move Motor		USER	1 ~ 10000	1
*P7-02	Move		USER	1 ~ 10000	100
*P7-03	Move Polar			0 ~ 1	1
*P7-04	Turret Cycle		USER	0 ~ 10000	0
*P7-05	MPG Move[REV]		REV	1 ~ 10000	1
*P7-06	MPG Pulse[PLS]	MPG Pulse	PLS	1 ~ 100000	100
*P7-07	Angle Division	JOG	USER	0 ~ 1000	0

150

P5-01	Position CMD0	0	USER	-99999.9~99999.9	10
P5-02	Position CMD1	1	USER	-99999.9~99999.9	20
P5-03	Position CMD2	2	USER	-99999.9~99999.9	30
~	~	~	~	~	~
P5-30	Position CMD29	29	USER	-99999.9~99999.9	300
P5-31	Position CMD30	30	USER	-99999.9~99999.9	310
P5-32	Position CMD31	31	USER	-99999.9~99999.9	320

200

Feeder

- Jog

Feeder .
 JOG 가 Feeder (Index, Turret) 가
). 가 180 ()
 P8-3 '1' CCWLIM CWLIM
 P8-3 '2' COMSEL2 COMSEL3 .

*P7-01	Move Motor		USER	1 ~ 10000	1
*P7-02	Mo		USER	1 ~ 10000	100 — 360
*P7-03	Move Polar			0 ~ 1	1
*P7-04	Turret Cycle		USER	0 ~ 10000	0 — 360
*P7-05	MPG Move[REV]		REV	1 ~ 10000	1
*P7-06	MPG Pulse[PLS]	MPG Pulse	PLS	1 ~ 100000	100
*P7-07	Angle Division	JOG	USER	0 ~ 1000	0 — 180

*P8-01	RUN_MODE			0 ~ 7	1 — 0
P8-02	STOP_TIME		msec	0 ~ 100000	100
*P8-03	LIM_SEL	Limit<->Jog<->Lim,Jog		0 ~ 2	0 — 1 2
*P8-04	Soft Lim Enable	Soft Limit		0~1	0
P8-05	Soft CCWLim	Soft CCWLim		-100000~100000	99999
P8-06	Soft CWLim	Soft CWLim		-100000~100000	-99999
*P8-07	Dog Select			0~1	0
*P8-08	AUTO_ORG	Origin		0 ~ 1	0
*P8-09	ORG_RULE			0 ~ 24	2

1. Multi write .
2. Data Type Float READ 10 .
 WRITE 10 .
3. Table '#' READ (- 32768~32767)
 . Drive Mount Loader .
4. Min, Max .
 Mount Loader / 가 가
5. ±0.1 가 .
 (가 , 가 .)
6. 가 . ex.) JOG , ALM , ()
7. PC - Loader . ()