



P-DORI for FDA7000(Beta)

P-DORI STATION USER MANUAL

VER 1.00

OTIS Elevator Korea

< CAUTION >.

1. (SVONEN Active) P-DORI Station
(Noise) .
2. P-DORI Station 20pin 9pin ()
(4) (Noise) .

1.

2.

2.1 P-DORI

3.

4.

1. P-DORI STATION

1.1 P-DORI STATION

AC P-DORI STATION
 P-DORI STATION , PC
 가
 (Download)

1.2 (Win 95, 98, 2000, XP)

1.2.1 CD DISK install

1. CD(DISK) CD-ROM(E:\) ()
2. P-DORI for FDA7000.exe
3. P-DORI STATION

1.2.2 install

- 1.
2. P-DORIforFDA7000_beta.exe
3. P-DORI STATION

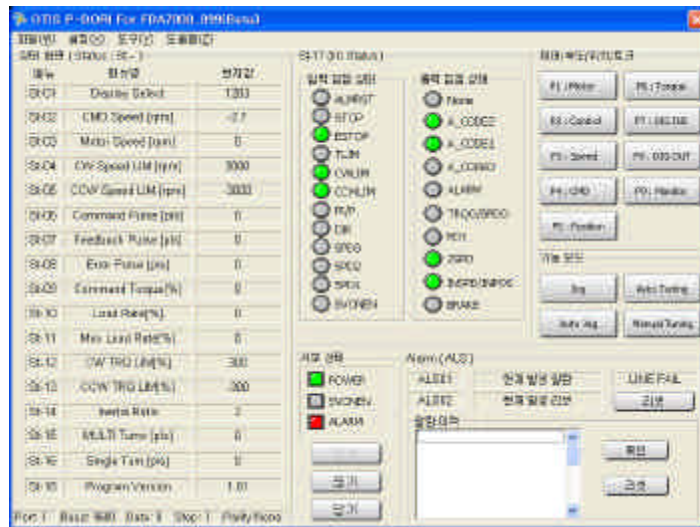
가 C:\Program Files\OTIS SERVO\P-DORI for FDA7000 가
 ‘P-DORIforFDA7000(beta) --- P-DORI’
 P-DORI STATION

2.

2.1 P-DORI Window

‘P-DORI for FDA7000(beta)’

P-DORI Window 가



1. P-DORI

P-DORI

2.1.1 Serial cable

PC

Serial cable

Serial cable

P-DORI



4

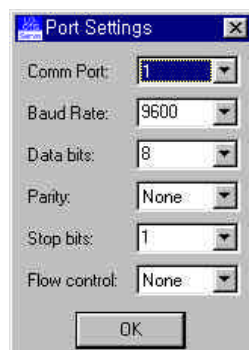
Serial cable

PC

PC

COM1

COM2



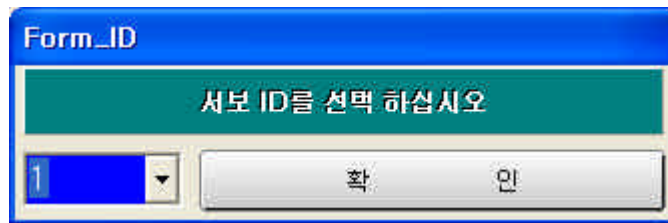
2.

Serial cable , P_DORI
 → Default COM1 가
 COM2(3) , Port Setting Comm Port 2(3)
 'OK'

2.1.2

ID

3 ID



3. ID

Status

ID !
 ID

2.1.3

(P--)

'P1 ~ P9'

가

가

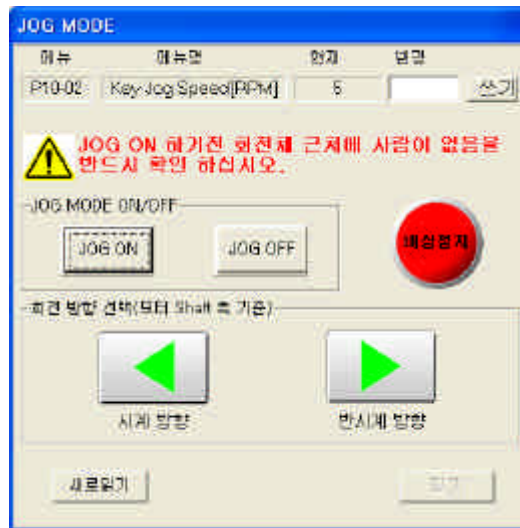
FDA-7000

2.1.4 (P6--) :

4 가 (Jog Mode), (Auto Jog Mode), (Auto Tuning Mode), (Manual Tuning Mode)가

2.1.4.1

, ' JOG ON'



4.

가 Stand-by 가 Jog Command

가

JOG , ' JOG OFF'

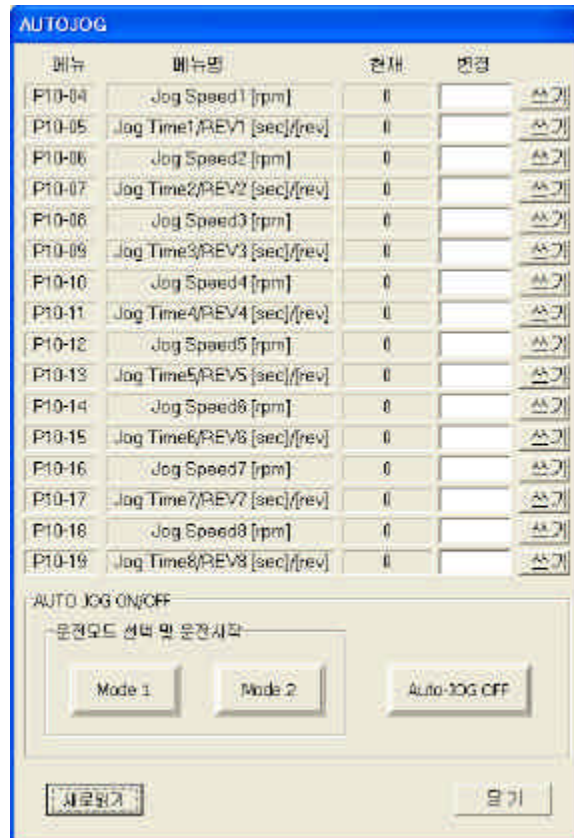
' JOG OFF' ' Close' , JOG

— ' JOG' ' JOG OFF'

JOG OFF

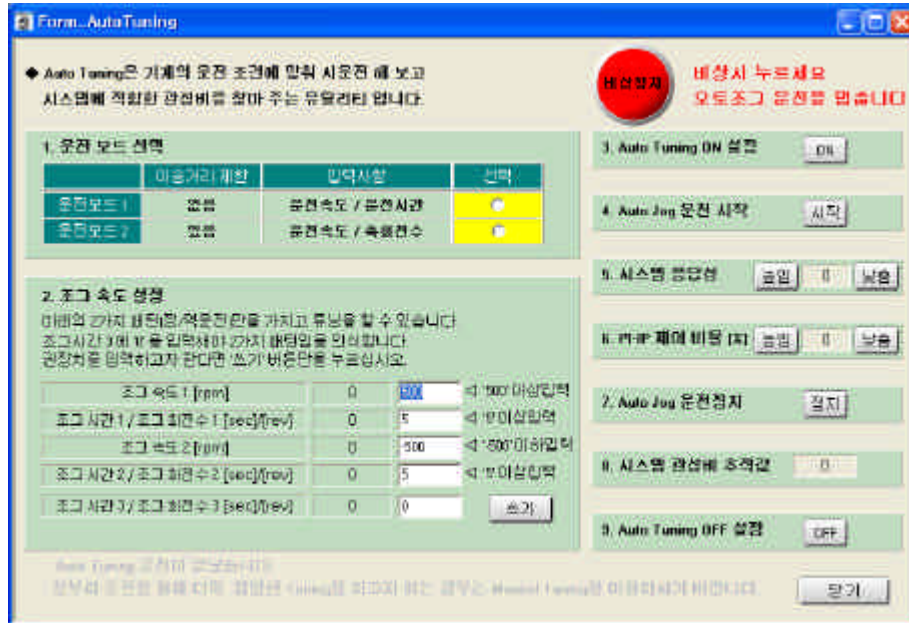
2.1.4.2

8 가
 ' Mode1' ' Mode2' 8 가
 가 가 Auto JOG
 ' Auto-JOG OFF' Auto-JOG OFF ' Close'
 , Auto JOG Auto JOG
 ' Auto-JOG OFF'



5.

2.1.4.3



6.

1, 2

Auto Jog

2.1.4.4



7.

2.1.5

P-DORI

1) On-Line

2) ' ' → ' ' ,

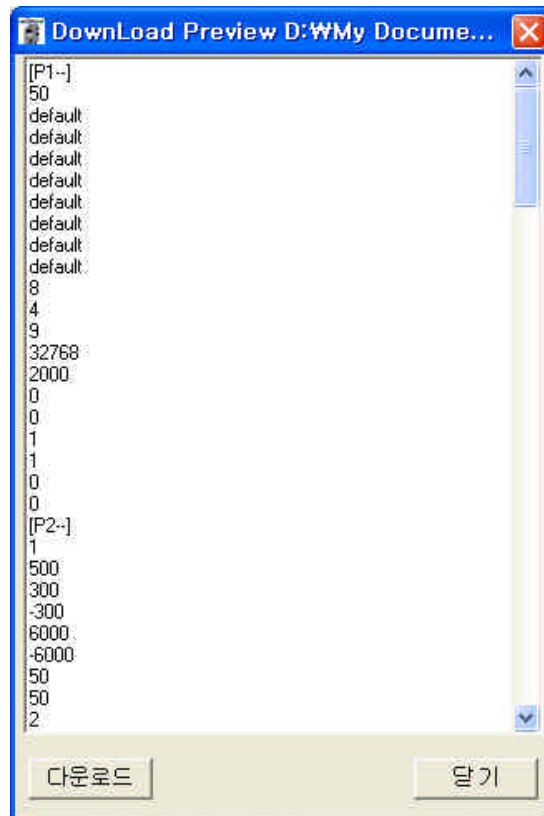
'*.lpa'

3)

4) ' ' → ' ' ,

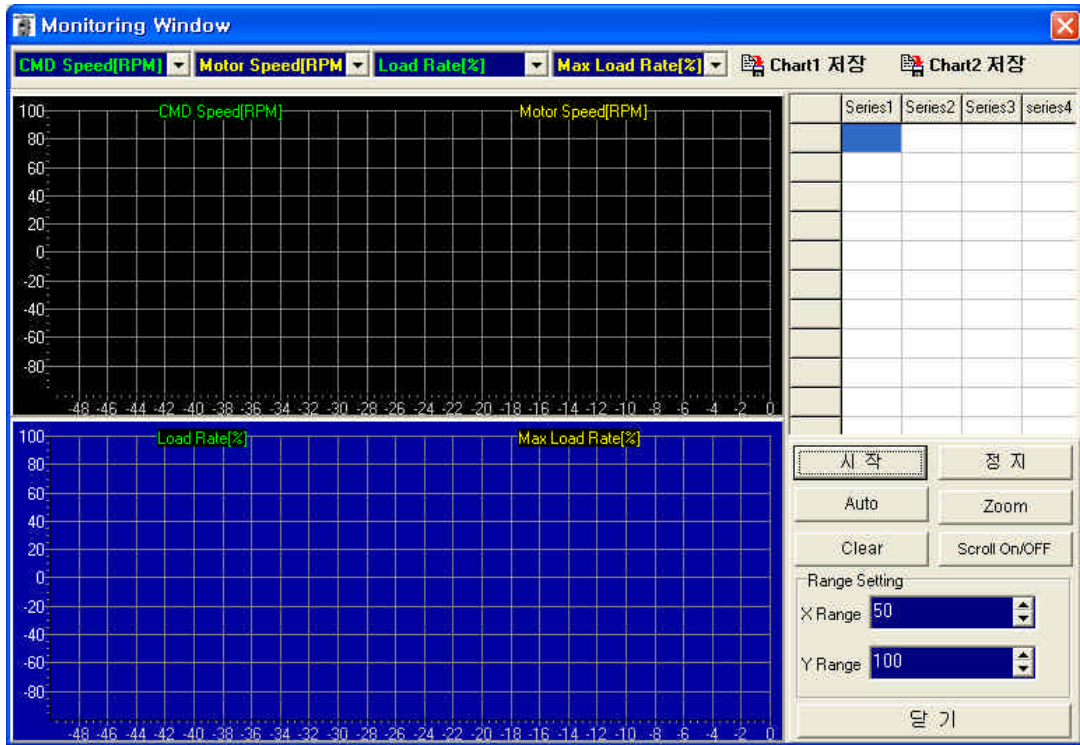
lpa

5) ' ' ,



8.

2.1.6 (Monitor)



9.

- 1) Sampling 9600[bps] 90 [ms] (Sampling Rate)
- 2) ' ' .
- 3) ' Auto' Y Range Range Setting
' Zoom' X-Y Range
- 4) ' ' ' Chart ' .
bmp
- 5) ' Clear' .
- 6) ' ' .

2.1.7 (Report)

‘*.vts’

번호	이름	단위	설정값	이름	단위	설정값	이름	단위	설정값
1	P01-01	Motor ID		P04-01	Speed1 [rpm]				
2	P01-02	inertia [g/cm ²]		P04-02	Speed2 [rpm]				
4	P01-03	TRQ Constant [kgcm/A]		P04-03	Speed3 [rpm]				
5	P01-04	Phase Inductance [mH]		P04-04	Speed4 [rpm]				
6	P01-05	Phase Resistance [Ω]		P04-05	Speed5 [rpm]				
7	P01-06	Rated Current [A]		P04-06	Speed6 [rpm]				
8	P01-07	Rated Speed [rpm]		P04-07	Speed7 [rpm]				
9	P01-08	MAX Speed [rpm]		P03-08	Torque1 [%]				
10	P01-09	Rated TRQ [kgcm]		P03-09	Torque2 [%]				
11	P01-10	Pole Number [pole]		P04-10	Torque3 [%]				
12	P01-11	Orms ID		P04-11	Torque4 [%]				
13	P01-12	Encoder ID		P04-12	Torque5 [%]				
14	P01-13	Encoder Pulse [ppr]		P04-13	Torque6 [%]				
15	P01-14	Pulse Out Rate [pulse]		P03-14	Torque7 [%]				
16	P01-15	COM Band Rate		* P08-01	POS Gain Mode				
17	P01-16	Send Select		* P08-02	POS Pulse Type				
18	P01-17	Send ID		* P08-03	Speed Mode				
19	P01-18	Send ID		* P08-04	Feedforward [%]				
20	P01-19	Parameter Lock		* P08-05	FC F Gain [Hz]				
21	P01-20	Send Origin		* P08-06	FC P Gain [Hz]				
22	* P03-01	Control Mode		* P08-07	FF Pulse EPR [pls]				
23	P02-02	Mode Change Time [ms]		* P08-08	IN Position [pls]				
24	P02-03	CCW TRQ DMT [Hz]		* P08-09	F allow EPR [pls]				
25	P02-04	CW TRQ LMT [%]		* P08-10	POS (CMD) TC [ms]				
26	P02-05	CCW Speed Limit [rpm]		* P08-11	FF TC [ms]				
27	P02-06	CW Speed Limit [rpm]		* P08-12	ELECTR Gear NUM1				
28	P02-07	Brake Speed [rpm]		* P08-13	ELECTR Gear DEN1				
29	P02-08	Brake Time [ms]		* P08-14	ELECTR Gear NUM2				
30	P02-09	DB Mode		* P08-15	ELECTR Gear DEN2				
31	P02-10	Notch F-start		* P08-16	ELECTR Gear NUM3				
32	P02-11	NF Frequency1 [Hz]		* P08-17	ELECTR Gear DEN3				
33	P02-12	NF Bandwidth1 [%]		* P08-18	ELECTR Gear NUM4				
34	P02-13	Notch Filter2		* P08-19	ELECTR Gear DEN4				
35	P02-14	NF Frequency2 [Hz]		* P08-20	Bias SPD COMPEN [rpm]				
36	P02-15	NF Bandwidth2 [%]		* P08-21	Bias Pulse Gen1 [pls]				
37	P02-16	TRQ Filter TC [ms]		* P08-22	Backlash Pulse [pls]				
38	P02-17	Auto Tuning		* P08-01	Analog TRQ TC [ms]				
39	P02-18	System Response		* P08-02	TRQ ACCEL Time [ms]				
40	P02-19	Inertia Ratio		* P08-03	TRQ DECEL Time [ms]				
41	P02-20	Gain ADJ Speed1 [rpm]		* P08-04	TRQ S-Mode [ms]				
42	P02-21	Gain ADJ Speed2 [rpm]		* P08-05	In TRQ Range [%]				

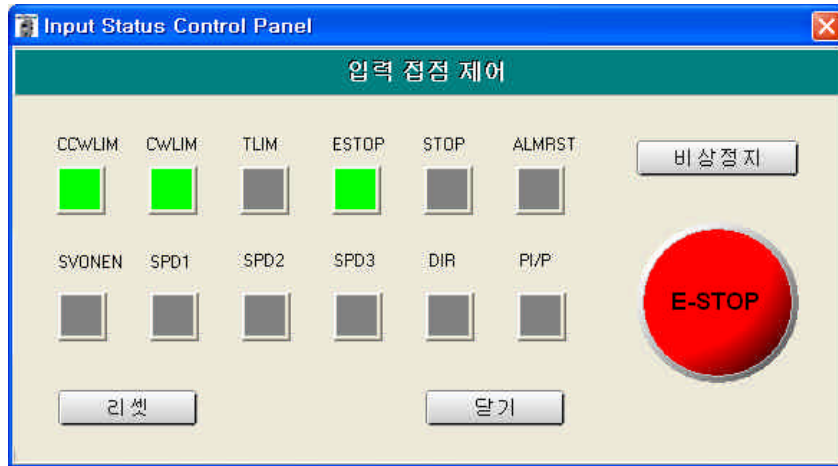
10.

- 1) ‘ ’
 - 2) ‘ ’
 - 3) ‘ ’
 - 4) ‘ ’
- Excel

‘*.vts’ 가

2.1.8 Input

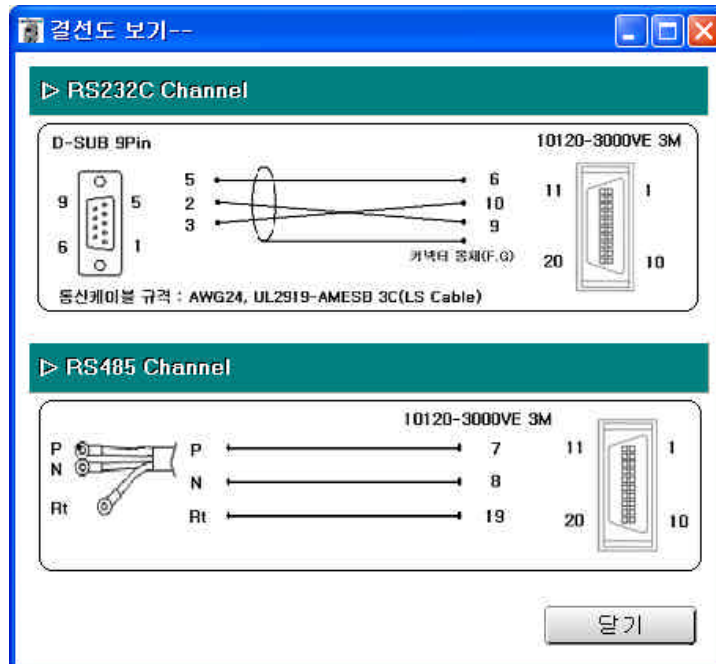
Serial I/O (P1-17)



11.

'E-STOP' IO

2.1.9



12.

3.

3.1

1. 가 .
2. P-DORI Station Serial cable .
3. .
4. **USB** .
 - 1) USB (WIN2000, XP P-DORI)
 - a) UC-232A (ATEN, Made in Taiwan) :
 - b) U232-P9 (Made in Taiwan) : 가.

3.2

1. 가 .
2. 가 ,
가 .

3.3

1. 가 .
가 .
2. Reset ,
가 .

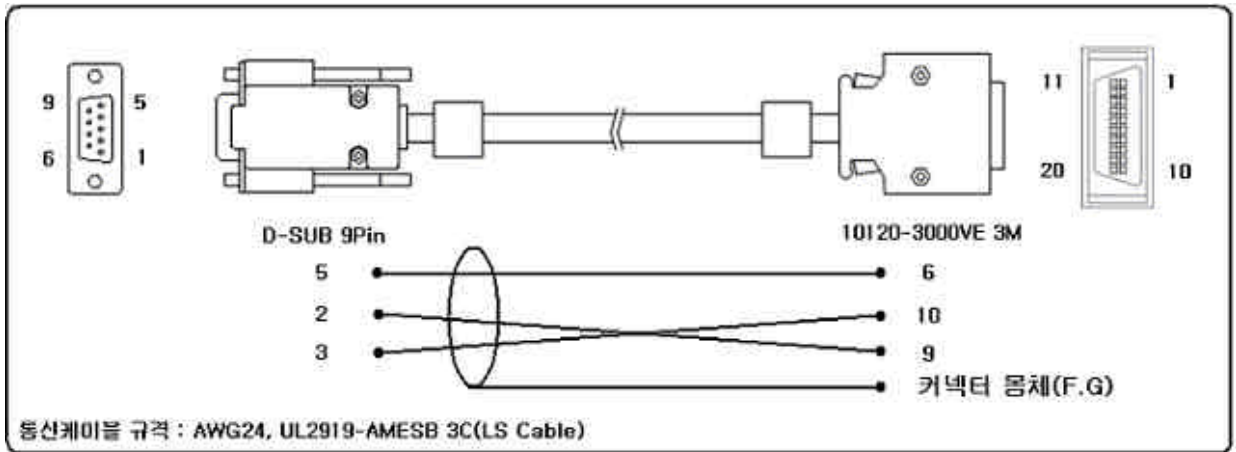
3.4 (Report)

Error

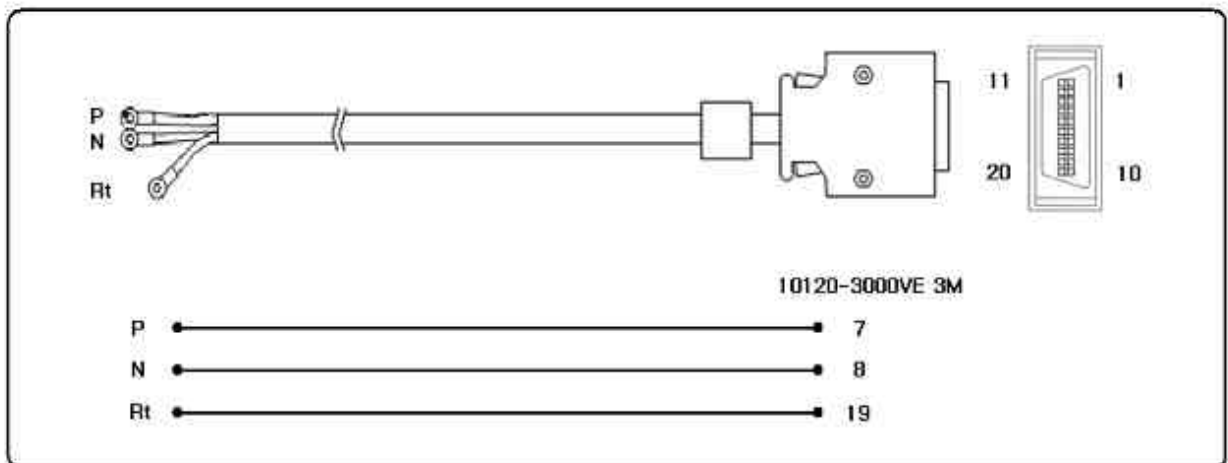
1. Window P-DORI STATION P-DORI
Error 가 가 Window 가 Report
OCX P-DORI STATION
'REPORT_OCX.Bat'

4.

4.1 RS232C



4.2 RS485



RS232C
D-SUB 9pin

Shield Cable

10120-3000VE

)